

ENBRIDGE GAS WEBINAR SERIES

November 2, 2023

1:00 PM

# Construction Heat Program Updates



# Construction Heat Program Updates

---

**Enbridge Gas Webinar Series**

Nov. 2, 2023 at 1 p.m.



# Agenda

- Safety moment
- Enbridge Gas & TSSA speakers
- The intent of today's webinar
- TSSA presentation
  - Roles and responsibilities
- Enbridge Gas presentation
  - Construction heat program updates
  - “buildwithgas” website updates
- Q&A

# Safety moment

---

**Damaging a natural gas line**

# Damaging a natural gas line has serious consequences



Seriously hurting yourself or co-workers.



Incurring expensive legal and repair costs, serious penalties and charges.



Losing productivity by bringing your project to a stop.



Jeopardizing future contracts and your reputation.



Interrupting natural gas service to the neighbourhood.

Always call before you dig and get a locate

# What to do if you damage a natural gas line



Stop work immediately.



Clear everyone from the area.



Call 911 if you smell or hear gas escaping.



Call the Enbridge Gas emergency line at 1-866-763-5427.

Always call before you dig and get a locate

# Polls! Where are you from?

- Where are you calling in from today?

# Polls! How do you use construction heat?

- How do you use construction heat?
  - A) Construction heaters
  - B) Gas appliances
  - C) Both
  - D) Only for appliance setup, adjustment and commissioning



# Housekeeping to maximize your webinar

- Have questions? Please place them ONLY in the Q&A.
- Be considerate, thoughtful and respectful in the CHAT.
- The BKC team is ready to help with tech concerns or general inquiries.
- Please complete the Survey Monkey questions following the presentation.
- Links and presentation materials will be shared with all attendees.
- Closed captioning is enabled if you require a live transcript while the hosts are speaking. It's between Record and Reactions at the bottom of most screens.

# Enbridge Gas & TSSA: Introductions



Proudly Serving Ontario | 175 YEARS



**Gary Highfield**

TSSA

Fuels Safety Engineering Manager



**Sandra Cooke**

TSSA

Compliance Manager and Ombudsman



**Alfie Manias**

Enbridge

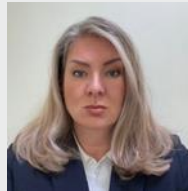
Supervisor, Utilization Engineering



**Jennifer Cunningham**

Enbridge

Supervisor, Utilization, Process and Governance



**Kelly Hart**

TSSA

Statutory Director Fuel Safety

# Intent of today's meeting

- Provide clear direction and training on the construction heat program:
  - Clarify expectations and accountabilities for all parties.
  - Clarify the allowable use of the gas service and meter set.
  - Clarify the available resources on the Enbridge Gas website for builders and TSSA certificate holders (HVACs) and the recent updates.

# TSSA & Enbridge Gas Construction Heat/ Initial Putting Into Use Webinar

TSSA presenters:

Sandra Cooke – Compliance Manager

Gary Highfield – Fuels Safety Engineering Manager

Kelly Hart – Statutory Director Fuels Safety



PARTNERING  
FOR A  
SAFE ONTARIO

# Purpose

- Outline and clarify responsibilities of builders, TSSA certificate holders, TSSA registered contractors and TSSA licence gaseous fuels distributors.

# Regulatory requirements:

## O. Reg. 212/01 (Gaseous Fuels)

7. (1) Where premises are connected to a supply of gas for the first time, no person shall put an appliance in the premises into use for the first time until the distributor has examined the installation of the appliance and is satisfied that the installation and use of the appliance are in compliance with this Regulation.

(2) An examination under subsection (1) shall include an examination of all appliances intended to be installed at the time of occupation of the premises.

Link: [O. Reg. 212/01: GASEOUS FUELS \(ontario.ca\)](https://www.ontario.ca/laws/regulation/01212.html)

# Construction Heat:

Certain furnace manufacturers allow their equipment to be used for construction heat during the winter season – this is specified in their Installation Instructions resulting in:

- Gas being allowed to the premise prior to the distributor inspection and installation of all appliances required at the time of occupancy.

After the furnace is used for construction heat, the following shall be done:

- Gas turned **off**.
- Furnace and duct work cleaned.
- All appliances installed and commissioned.
- Fuel distributor conducts inspection prior to occupancy.

# Construction Heat:

TSSA is finding that gas is being turned on or left on prior to the distributor inspection and sometimes after occupancy.

- This webinar is a refresher, however TSSA has started and will continue to take enforcement action up to and including, issuing orders, authorization revocation and prosecution.



# Advisory FS-262-23

- Outlines the roles and responsibilities of persons involved in activating appliance in new construction situations.
- The CSA B-149.1, Natural Gas and Propane Installation code requires that all appliances be installed and commissioned in compliance with code and manufacturer's instructions.
- TSSA recognizes that under certain circumstances, including new home construction or renovation, the contractors and certificate holders who install the appliances may not be the party who commissions the appliance. There is no regulatory requirement that the installer of a gas appliance shall also perform the commissioning.

Link: [Commissioning-of-Appliances-Jun142023.pdf \(tssa.org\)](#)

# Advisory FS-262-23

## Certificate holders:

- Shall possess the certificate appropriate for the fuel rating of the appliance whether installing or commissioning.
- When commissioning an appliance:
  - Shall ensure that the appliance is installed in a safe manner and in accordance with the manufacturer's instructions and the CSA-B-149.1 code.
  - Shall ensure all appropriate tests are performed to ensure the appliance is in safe operating condition.

# Advisory FS-262-23

## Certificate holders (Continued):

- If this situation involves supply gas to the premise for the first time (other than construction heat), the certificate holder can use gas for the purpose of commissioning; however, the appliance(s) cannot be put into use until the distributor has completed their initial inspection. The certificate holder shall turn the gas off and tag the upstream gas valve(s) that it shall remain off until the distributor completes their initial inspection.
- The certificate holder who commissions the appliance(s) takes responsibility that the installation(s) is safe for use and meets the fuel safety regulations including the CSA 149.1 Code, the manufacturer's installation instructions.

# Advisory FS-262-23

## Contractors:

- Shall ensure that the certificate holder who installs or commissions the appliance holds the appropriate certificate.
- Shall ensure that employees engaged in the installation or commissioning of appliance(s) are in compliance with the TSS Act, its associated regulations, codes and manufacturer's installation instructions.

# Advisory FS-262-23

## Distributors:

- Shall ensure that their initial inspection includes all the appliances that are installed at the time of occupancy including ensuring that the appliance(s) have been installed in accordance with all applicable requirements, have been commissioned in accordance with the code and manufacturer's installation instructions and the work performed by the certificate holder(s) ensure the appliances are safe to use.

# Advisory FS-262-23

- Certificate holders, contractors and distributors all play a key role in the safety chain and must ensure that the appliance(s), during and post-construction, are safe for use.
- TSSA has no authority or position on warranty issues.

Link: [Commissioning-of-Appliances-Jun142023.pdf \(tssa.org\)](https://www.tssa.org/Commissioning-of-Appliances-Jun142023.pdf)

# Enbridge Gas Construction Heat Program and Website Updates

---



Proudly Serving Ontario | 175 YEARS

Nov. 2, 2023

# Language alignment

**Construction use/heat** is the availability of gas for use during construction in an approved appliance prior to the Enbridge Gas final inspection.

**Set up, adjustment and commissioning** refers to the setup and adjustment of an appliance during the time that gas is available for construction heat. Appliances not approved for construction use must be returned to the off position and cannot be used during construction heat.

**Appliance Installer Validation form** is the document that is affixed to all natural gas appliances as verification that they were used appropriately for construction heat and/or set up, adjustment and commissioning work has been completed.

**Initial putting into use inspection**, also known as **final inspection**, is Enbridge Gas' duty to ensure the installation and use of the appliances are safe and in compliance with manufacturer's instructions, code and TSSA regulations.

**Safety violation (infraction)** is when an appliance is found to have not met the requirements of the Initial Putting into Use inspection.



# How do I request gas for construction heat?

- Use the GetConnected online tool and select gas for construction heat.
- Simple and fast system to get your gas service order placed and gas use scheduled.
- Reminder: if you wish to have natural gas available for set up, adjustment and commissioning of appliances, requesting construction heat will provide you that option.

# How do I request gas for setup, adjustment and commissioning?

- Use the GetConnected online tool and select gas for construction heat.
- Gas for setup, adjustment and commissioning is only available when requesting construction heat in the GetConnected online tool.
- Gas is not available otherwise and the gas riser cannot be unlocked by anyone other than an Enbridge Gas representative.
- Any appliances approved for construction use and not being used, and all appliances not approved for construction use, must be turned off.

# Builder obligations: gas for construction heat

- Gas riser and meter set are protected from debris and damage.
- Under no circumstance should the gas riser shutoff be unlocked or activated by anyone other than Enbridge Gas.
- Only a Record of Training (ROT) may activate gas for construction heaters, and only after the gas service has been unlocked by Enbridge Gas for construction heat.
- Only a TSSA certificate holder may activate gas for gas appliances, again and only after the gas service has been unlocked by Enbridge Gas for construction heat.
- An appliance certified for construction use may remain on and in use.
- Appliances not certified for construction use must be returned to the off position and must not be used during construction heat.

# Builder obligations continued...

- An Appliance Installer Validation form:
  - Is required for each appliance and completed by the applicable TSSA certificate holder.
  - The TSSA certificate holder takes responsibility for all the requirements on the form and the gas appliance, associated supply air, venting systems and gas piping, ensuring it is safely operating and meets all the requirements of CSA B149.1 and manufacturer's installation instructions.
  - The form (when ordered from Enbridge Gas), has 3 copies - the Homeowner, Builder and TSSA Certificate Holder.
- Any and all safety violations should be addressed and corrected prior to homeowner occupancy.
- Gas for construction use and/or setup, adjustment and commissioning is a privilege for both the builder and Enbridge Gas.

# What happens if I don't request construction heat?

- Builder/HVAC will request a meter set with final inspection.
- Builder will accept that they will receive B-Tags (safety violation) requiring for set up, adjustment and commissioning for all appliances.
- Enbridge Gas will unlock the meter, introduce gas and perform the final inspection.
- All appliances will receive B-Tags (safety violation).
- The TSSA certificate holder will return to site to perform the set up, adjustment and commissioning of all gas appliances, and then notify Enbridge Gas to clear the B-Tags (safety violation) or any other infractions.
- No Appliance Installer Validation forms are required.

# Purpose of the Appliance Installer Validation form

Provides Enbridge Gas and the TSSA confirmation that:

- The appliance **was approved** for construction use/heat by the manufacturer.
- The appliance used for construction heat and ducts are clean and ready to be put into use at the final inspection.
- A TSSA certificate holder **has completed** the necessary set up, adjustment and commissioning (combustion analysis if required) for all gas appliances and are ready to be put into use at the final inspection.
- Arrangements **have been made** to instruct the homeowner on safe operation of the appliances.
- All requirements under the OREG and B149 code have been addressed.

# Builder and TSSA certificate holder help

Please refer to the Enbridge Gas website:

[Residential/Commercial Builders & HVACs | Enbridge Gas](#)

Faster and easier, go to **buildwithgas.com**

- Link to the GetConnected tool
- Resources to clarify construction heat and final inspection requirements
- Link for ordering free forms and tags, including the Appliance Installer Validation form, purge and test tags, violation forms
- New: HVAC templates for furnace and water heater commissioning

Resource centre for consistent messaging and information

# Still can't find what you are looking for? Who do I call for help?

## **1-866-772-1045**

### **Builder/HVAC Attachment Centre**

- New gas services/GetConnected
- Projects and subdivisions
- Meter sets
- Construction heat
- Final inspections

## **1-877-362-7434**

### **Customer Care Centre**

- Cut off at mains/demolitions
- Forms
- Billing issues
- Damaged meters
- Safety violations (infractions)



# Q&A review and feedback

---

# Thank you!

---



# Appendix

---

## O.REG 212/01 – Clause 7 Initial putting into use

- (1) Where premises are connected to a supply of gas for the first time, no person shall put an appliance in the premises into use for the first time until the distributor has examined the installation of the appliance and is satisfied that the installation and use of the appliance are in compliance with this Regulation. O. Reg. 212/01, s. 7 (1).
- (2) An examination under subsection (1) shall include an examination of all appliances intended to be installed at the time of occupation of the premises. O. Reg. 212/01, s. 7 (2).

## CSA B149.1 – Section 4.3 Responsibilities of the installer

- 4.3.1** Before leaving installations, *installers* shall ensure that the *appliance, accessory, component, equipment*, or piping and tubing they installed complies with the Code requirements, and the person initially activating the *appliance* shall ensure that the *appliance* is in safe working order.
- 4.3.2** *Installers* shall instruct the user in the safe and correct operation of all *appliances* or *equipment* that they install.
- 4.3.3** The *installer* shall ensure that the manufacturer's instructions supplied with the *appliance* are left with the user.

# B-Tag: How is it cleared?

## O.REG 212/01 – Clause 13 Unacceptable Condition – Immediate Hazard (A Tag) vs. Clause 14 Unacceptable Condition – No Immediate Hazard (B Tag)

- Installation would not qualify for an A Tag, if installed safely, by the manual and lacks work completion
- B Tags vs. A Tags, acknowledging Installers in most cases would not have the gas supply for a meter unlock with final inspection and provide greater flexibility for the Installer to return, complete the work and clear the tag for Setup and Commissioning before follow-up by the Fuel Distributor (42 days to maximum of 90 days).

## O.REG 212/01 – Clause 14 Unacceptable Condition – No Immediate Hazard (B Tag)

### How a B – Tag is cleared:

14 (5) Where a notice is affixed to an appliance or work under clause (1) (b) or (3) (d), no person shall remove the notice unless the person holds a certificate for that purpose and on removing the notice the person shall endorse his or her certificate number, name and address on the notice and send it by prepaid registered mail or deliver it to the distributor. O. Reg. 212/01, s. 14 (5).

***Only a TSSA Certificate Holder can clear the tag after correcting the issue and submit it to Enbridge Gas with the associated information.***